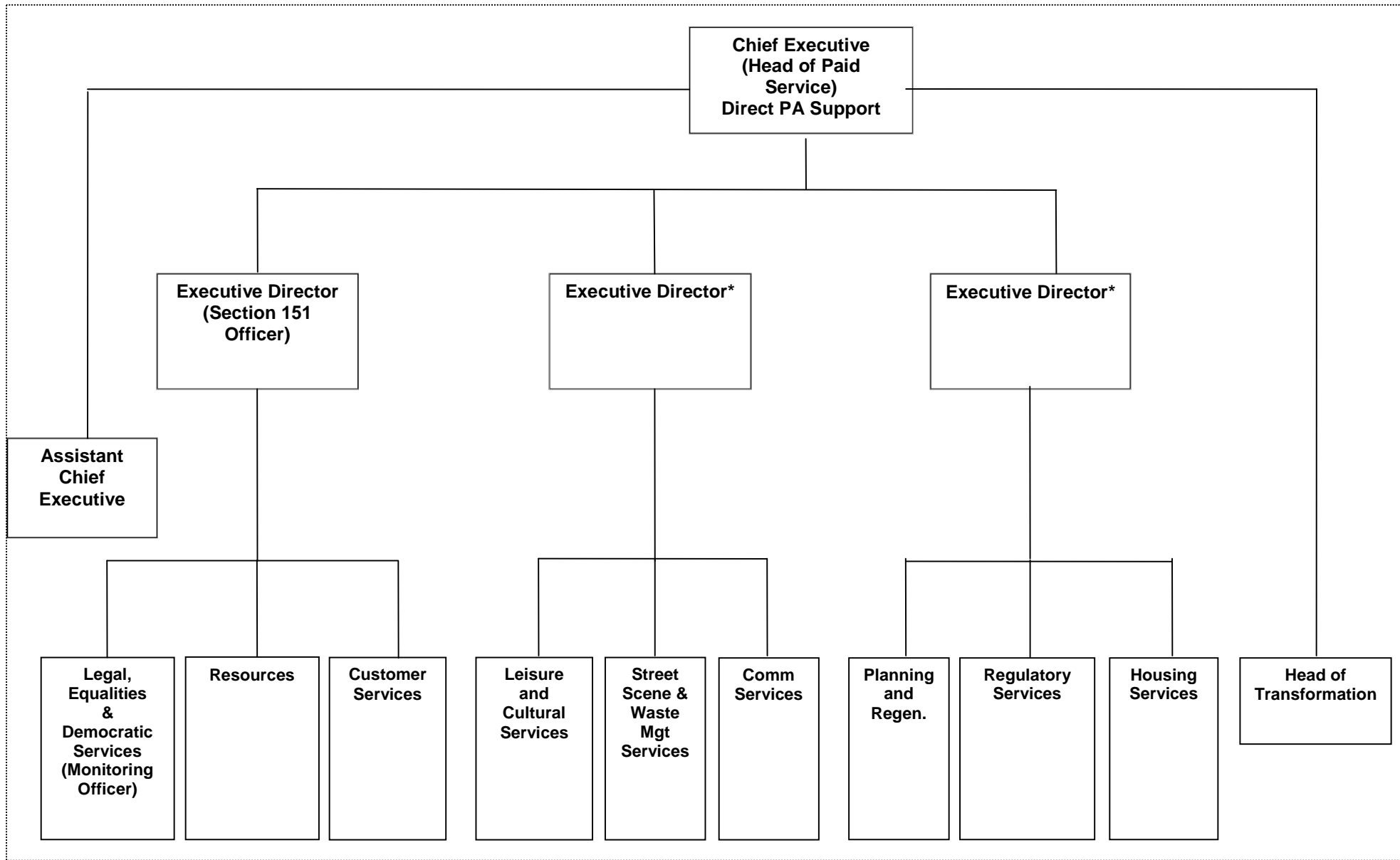


Bromsgrove District Council and Redditch Borough Council – Proposed Single Management Structure (subject to consultation)



Assistant Chief Executive

- LSP & Other Strategic Partnerships
- Performance Management & Improvement
- Policy (excluding service specific strategy)
- Consultation & Community Engagement
- Communications, Marketing and Promotion
- Customer Insight
- Special Projects
- Inspections (CAA etc)
- Complaints
- Civic Support
- Corporate Administration/ Central Post Opening & Reception
- Climate Change / Agenda 21(Energy Efficiency)

Head of Transformation

- I.C.T.
- Business Development
- E Government
- Web Development
- Printing & Reprographics
- GIS
- Transformation, Business Process Re-engineering and Lean Systems
- Information Management
- Freedom of Information, Data Protection, Records Management
- Organisational Development (including Workforce Planning and Succession Planning)
- Training & Development

EXECUTIVE DIRECTOR

Head of Legal, Equalities & Democratic Services

- Professional Legal Advice & Services
- Right to Buy
- Election & Electoral Services, Periodic Electoral Review
- Democratic Services & Member Support
- Monitoring Officer Role, Probity & Standards
- Governance
- Advice to Parishes
- Member Development
- Equalities & Diversity

Head of Resources

- Accounts & Financial Management & Advice
- Corporate Income & Debt Management
- Procurement
- Revenues & Benefits
- Audit
- Risk Management
- Payroll
- Property, Assets & Facilities Management (including Caretakers)
- Human Resources & Welfare
- Health & Safety

Head of Customer Services

- Customer Service Centre
- One Stop Shops
- Cashiers
- Customer First
- Customer Access and Customer Engagement

*

One Director will take the lead for Redditch issues and one for Bromsgrove issues.

One Director will also be designated as Deputy Joint Chief Executive and act as Head of Paid Service in Joint Chief Execs absence.

EXECUTIVE DIRECTOR

Head of Leisure and Cultural Services

- Leisure/Sports Centres/Dual Use Facilities
- Sports and Recreation Development
- Arts Development
- Children & Young People, Play
- Health Education/Interventions
- Parks and Open Spaces
- Allotments
- Museum
- Events
- Community Centres
- Theatre

Head of Street Scene and Waste Management Services

- Refuse & Recycling
- Waste Management, Policy, Promotion, Management
- Car Parks/Civil Enforcement Parking
- Shopmobility
- Street Scene / Street Cleansing
- Grounds Maintenance/ Landscaping
- Highways
- Cesspools/Sewers
- Public Conveniences
- Fly Tipping, Bill Posting
- Abandoned Vehicles
- Pest & Dog Controls
- Engineering Design
- Street Naming and Numbering
- Cemeteries / Crematorium
- Land Drainage

Head of Community Services

- Community Cohesion (Older and Young People)
- Social Inclusion
- Community Safety
- Anti Social Behaviour Team
- CCTV & Lifeline Operation & Development
- Voluntary Sector & Community Networks, Grant Aid
- Transport
- Community Transport / Dial A Ride
- Bus Passes / Concessionary Fares
- Grant Aid
- Housing Strategy and Enabling Role etc.

*

One Director will take the lead for Redditch issues and one for Bromsgrove issues.

One Director will also be designated as Deputy Joint Chief Executive and act as Head of Paid Service in Joint Chief Execs absence.

EXECUTIVE DIRECTOR

Head of Regulatory Services	Head of Planning and Regeneration	Head of Housing
<ul style="list-style-type: none">• Environmental Health / Protection / Enforcement• Public Health & safety• Food Safety• Licenses (all)	<ul style="list-style-type: none">• Strategic Planning (Planning & Local Development Framework)• Development Control• Building Control• Land Charges• Emergency Planning / Business Continuity• Conservation• Tree Officers• Travellers• Economic and Tourism Development (including Business Centres and Markets)	<ul style="list-style-type: none">• Housing Revenue Account activities including DLO for Housing• Homelessness• Children's Centres• Care and Repair Agency• Capital Improvements• Housing Options• Housing Performance and Database• St David's House• Disabled Facilities Grants

*

One Director will take the lead for Redditch issues and one for Bromsgrove issues.

One Director will also be designated as Deputy Joint Chief Executive and act as Head of Paid Service in Joint Chief Execs absence.